

SAIGON A COCHINCHINE

Each auxiliary post office was assigned its own letter of the alphabet. The first auxiliary post office, Saigon A, opened in 1906. Saigon A used distinctive hexagonal postmarks. With this example, the postmark was struck on a picture postcard in its first year of use.



POSTMARK TYPE: H
PERIOD OF USE: 1906-26



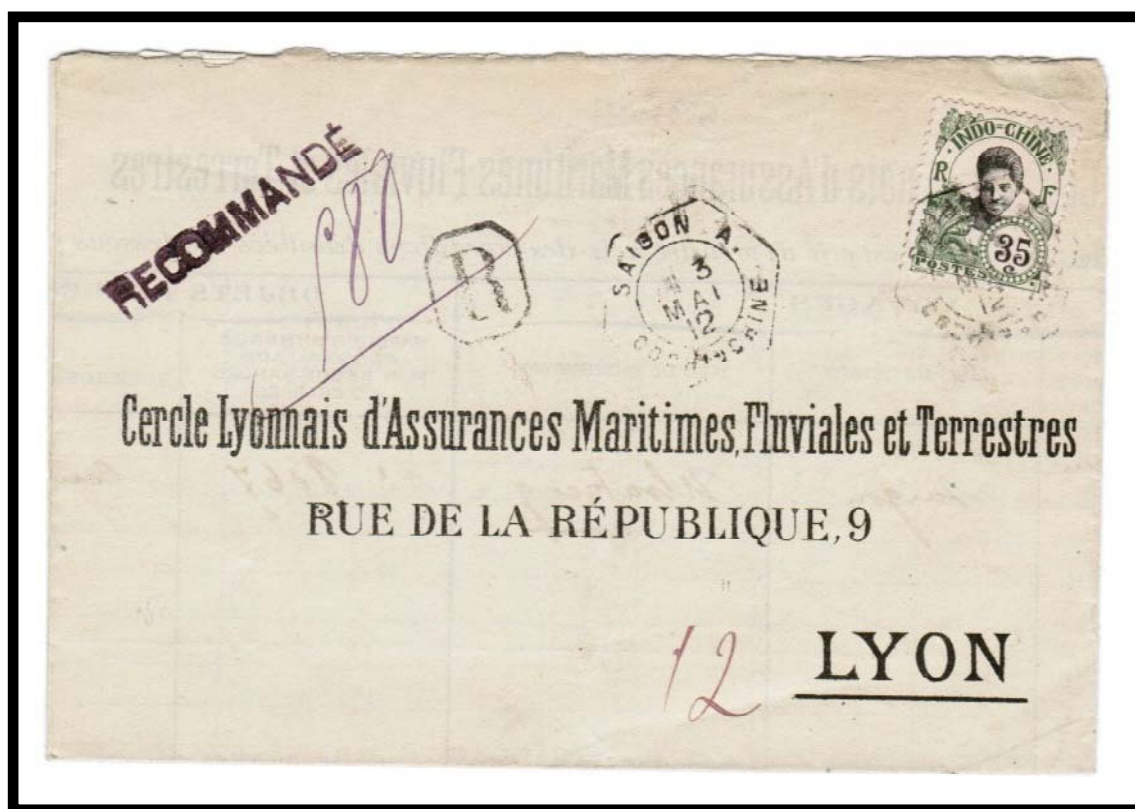
POSTAL MARKINGS
SAIGON A COCHINCHINE 5 SEPT 06
REVERSE
NAVE CALABRIA 5 OT 06

SAIGON A.
COCHINCHINE

With is variety of the hexagonal SAIGON A type H postmark, there is a period after the "A." In most other cases, a period is not present.



POSTMARK TYPE: H
PERIOD OF USE: 1906-26



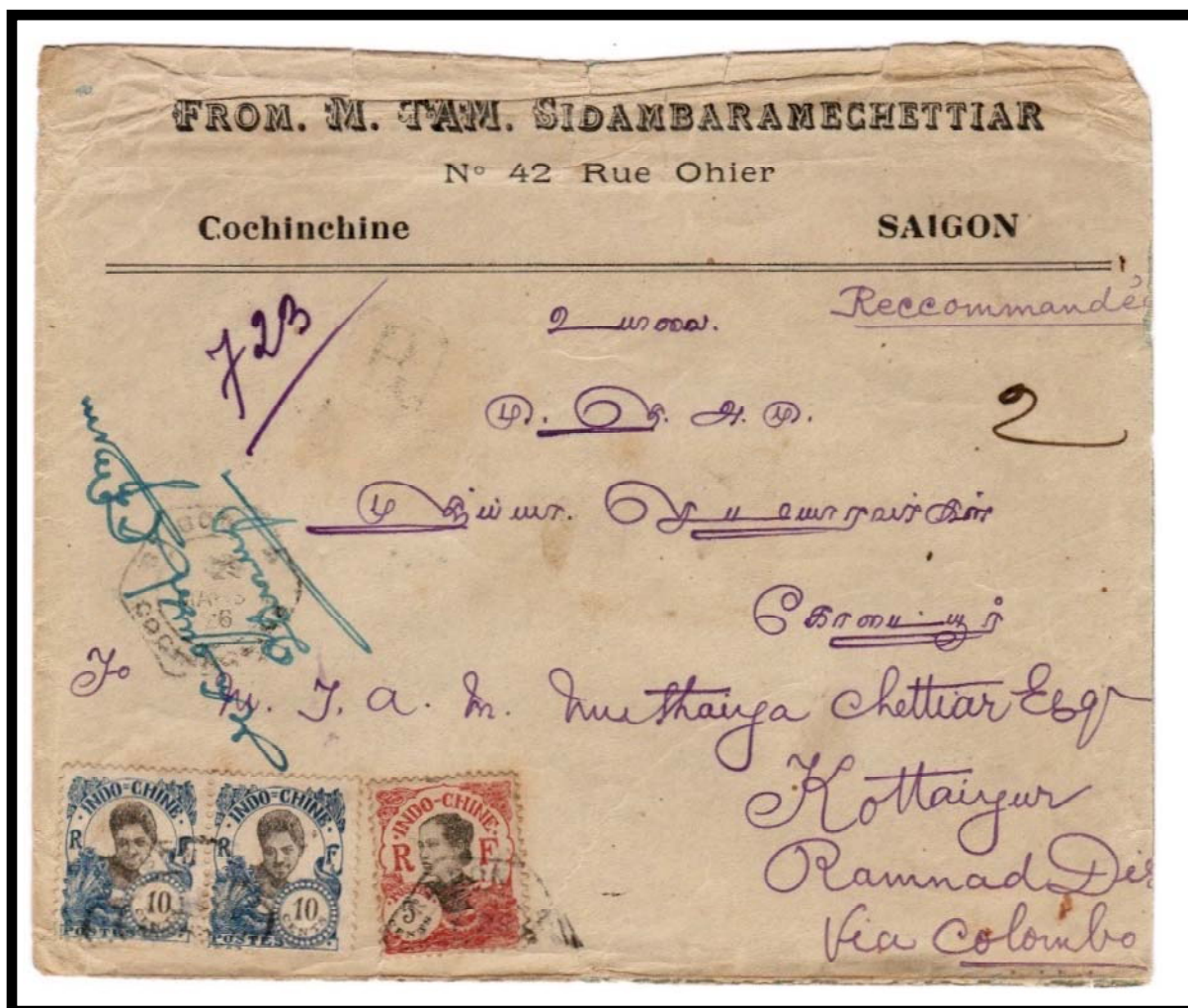
POSTAL MARKINGS
SAIGON A. COCHINCHINE 3 MAI 12
framed R with manuscript registration number
REVERSE
LYON RHONE 6 VI 12

SAIGON A COCHINCHINE

The hexagonal Saigon A postmark was in use for 20 years. The final year of use was 1926.



POSTMARK TYPE: H
PERIOD OF USE: 1906-26



POSTAL MARKINGS
SAIGON A COCHINCHINE 29 MARS 26
REVERSE
KOTTAIYUR 14 APR 26

SAIGON A
COCHINCHINE

Long after it introduced the hexagonal postmark, auxiliary post office A put a type G postmark into service. This is the first recorded example of this postmark.



POSTMARK TYPE: G
PERIOD OF USE: 1922



POSTAL MARKINGS

SAIGON A COCHINCHINE 3-4 22
framed R with manuscript registration number

SAIGON.A COCHINCHINE

The type G1 SAIGON A postmark is known in two forms: "SAIGON.A" and "SAIGON-A". An example of the former is shown here.

For auxiliary post office, the postmark was relatively long-lived remaining in service for a decade and a half.



POSTMARK TYPE: G1
PERIOD OF USE: 1928-42

POSTAL MARKINGS

SAIGON.A COCHINCHINE 24-8 28
framed R with manuscript registration number

REVERSE

AMIENS SOMME 24-9 28

SAIGON - A COCHINCHINE

The Saigon A post office used the type G2 postmark for a short period during World War II. The type G2 postmark, with its characteristic dashed outer border, was one of Indochina's least used formats.



POSTMARK TYPE: G2
PERIOD OF USE: 1942-43



POSTAL MARKINGS

SAIGON-A COCHINCHINE 13-7 43
registration label

REVERSE

SAIGON-PRINCIPAL COCHINCHINE 13-7 43
PNOMPENH CAMBODGE 14-7 43

SAIGON A COCHINCHINE

The hexagonal postmark was resurrected for auxiliary post office A in 1949. With type H2, the border is dashed as opposed to the earlier hexagonal postmark, which was outlined with a solid line.



POSTMARK TYPE: H2
PERIOD OF USE: 1949-52



POSTAL MARKINGS
SAIGON-A COCHINCHINE 13-9 1949
REVERSE
CANTHO COCHINCHINE 14-9 1949

SAIGON A SUD VIET-NAM

Like other post offices, the auxiliary Saigon A post office switched from "COCHINCHINE" to "SUD VIET-NAM." The last year of use for the circular type V1(t) postmark was 1951.



POSTMARK TYPE: V1(t)
PERIOD OF USE: 1949-51



POSTAL MARKINGS
SAIGON A SUD VIET-NAM 1-2 1951

SAIGON-A
SUD VIET-NAM

With the new name for the country, the hexagonal postmark was altered in 1949, replacing "COCHINCHINE" with "SUD VIET-NAM." This postmark remained in use until 1952.



POSTMARK TYPE: VH2
PERIOD OF USE: 1949-52



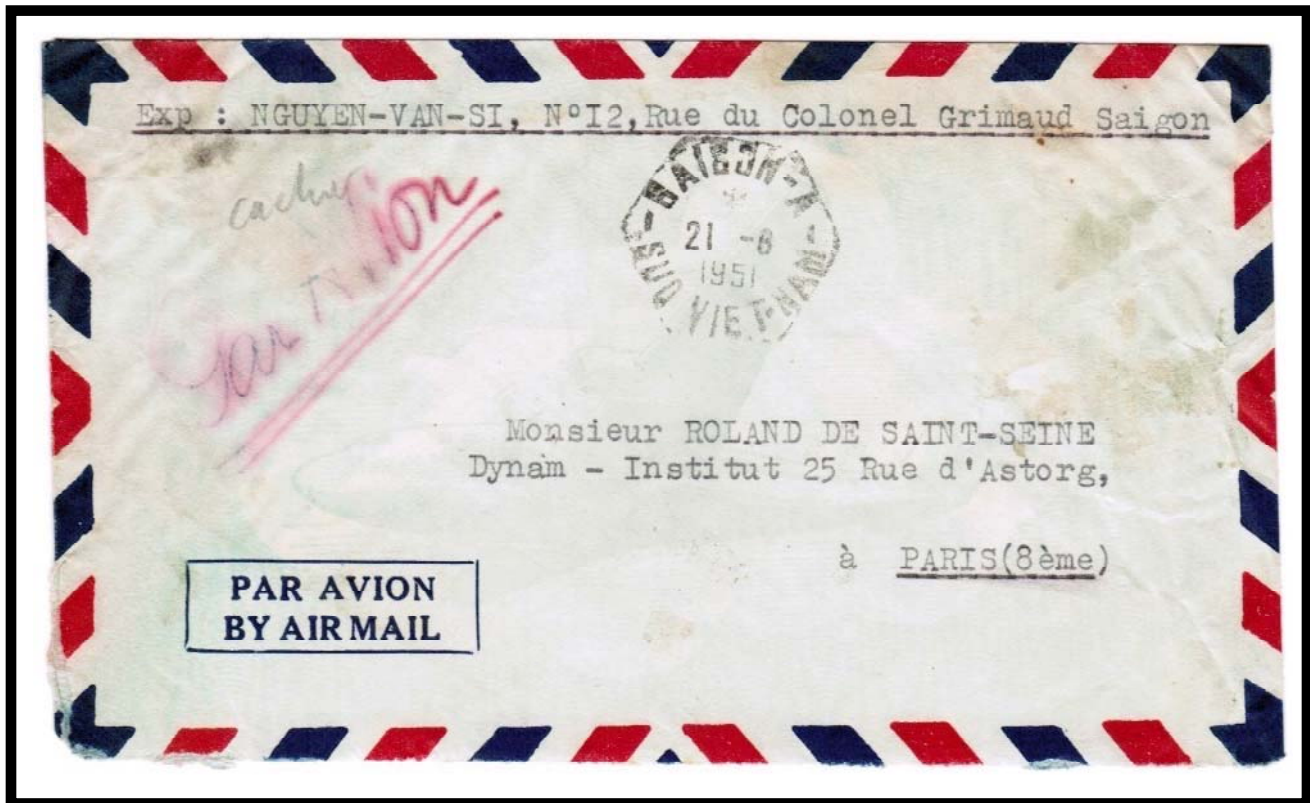
POSTAL MARKINGS
SAIGON-A COCHINCHINE 23-5 1950

SAIGON A
SUD VIET-NAM

By 1951, the short dashes in the outer boundary of the Saigon A postmark had merged to form long dashes almost giving the boundary the appearance of being solid rather than interrupted.



POSTMARK TYPE: VH2
PERIOD OF USE: 1949-52



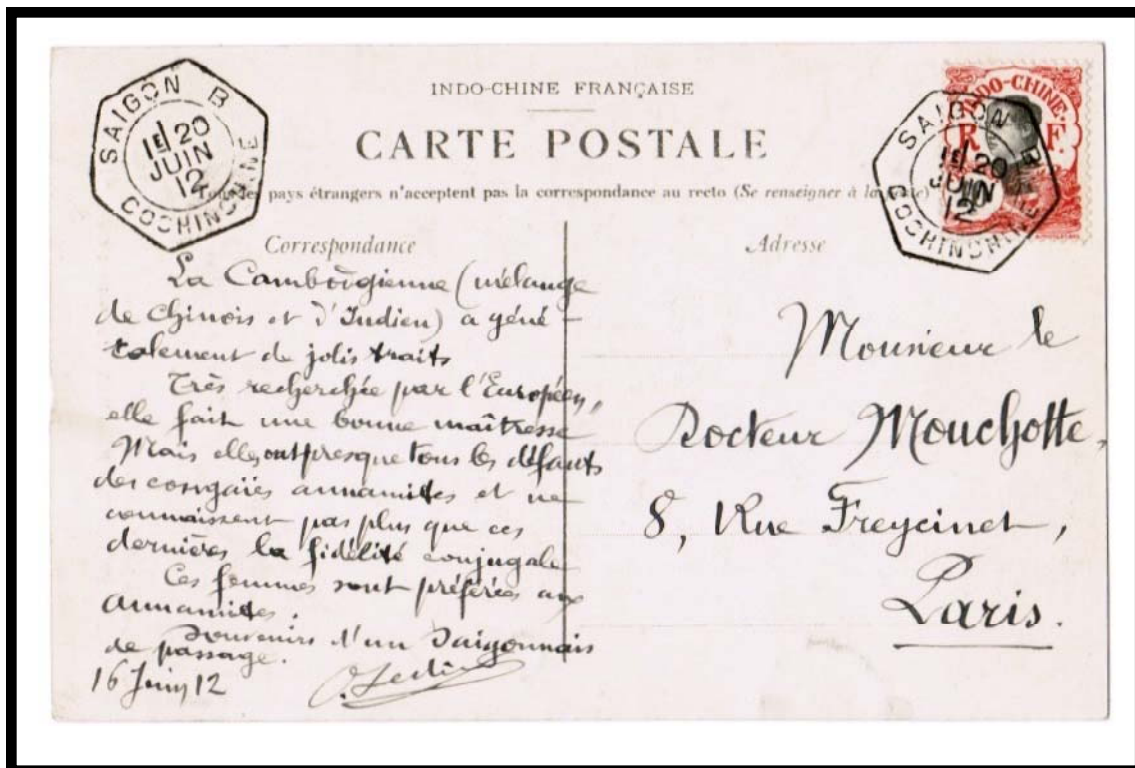
POSTAL MARKINGS
SAIGON-A SUD VIET-NAM 21-6 1951
REVERSE
SAIGON-A SUD VIET-NAM 21-6 1951

SAIGON B COCHINCHINE

Following establishment of the Saigon A post office in 1906 by one year was the Saigon B auxiliary post office. Its first postmark was the hexagonal type H format.



POSTMARK TYPE: H
PERIOD OF USE: 1907-25



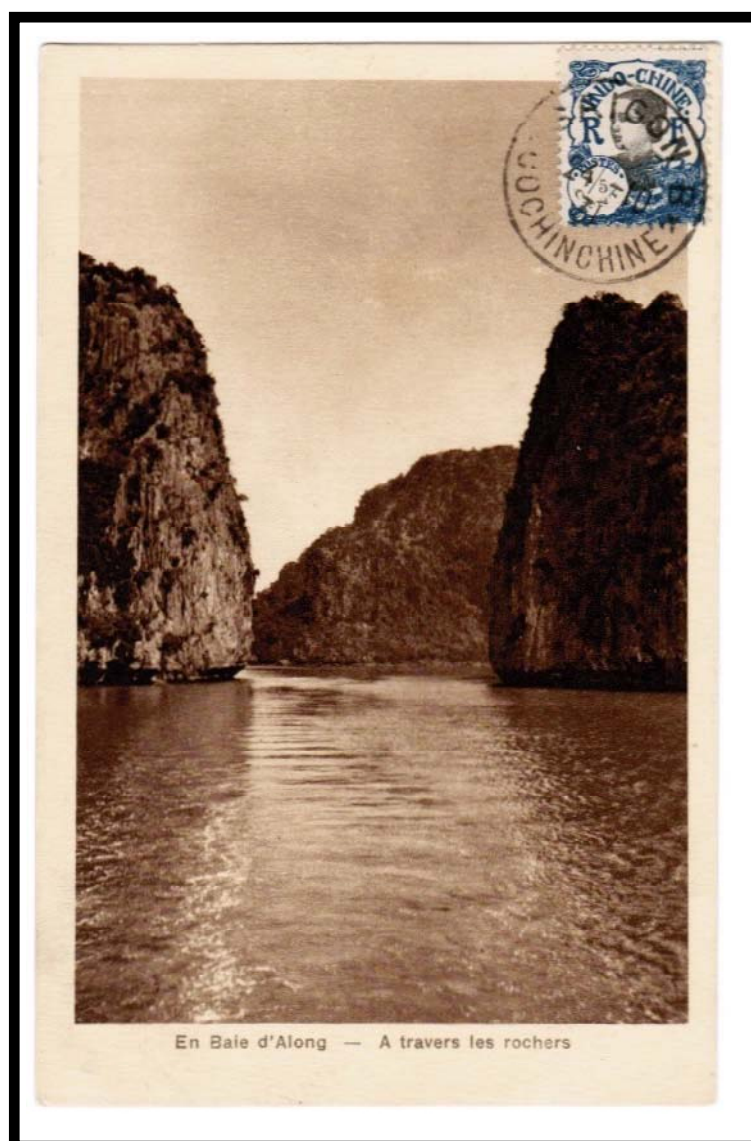
POSTAL MARKINGS
SAIGON B COCHINCHINE 20 JUIN 12

SAIGON B
COCHINCHINE

The second auxiliary post office's type G1 postmark was used to favor cancel the low value stamp on this picture postcard.



POSTMARK TYPE: G1
PERIOD OF USE: 1929-32/48



POSTAL MARKINGS

SAIGON B COCHINCHINE 24-10 31

SAIGON-B
COCHINCHINE

In this variety of the "SAIGON-B" postmarks, a hyphen is between "SAIGON" and "B." It is only known from 1929.



POSTMARK TYPE: G1
PERIOD OF USE: 1929



POSTAL MARKINGS
SAIGON-B COCHINCHINE 5-2 29
registration label
REVERSE
YOKOHAMA A MARSEILLE No 10 5-2 29

SAIGON.B.
COCHINCHINE

The second and last hexagonal postmark for Saigon B was a type H1 device. Its use has only been recorded from the year 1949.



POSTMARK TYPE: H1
PERIOD OF USE: 1949



POSTAL MARKINGS
SAIGON.B. COCHINCHINE 30-8 1949

SAIGON C
COCHINCHINE

"C" was the last letter in the alphabet that appeared in Saigon's type H postmark. Later, the "C" reappeared in different postmark formats.



POSTMARK TYPE; H
PERIOD OF USE: 1906-16



POSTAL MARKINGS

SAIGON C COCHINCHINE 25 FEVR 16
large plain "R" with manuscript registration number

SAIGON C
COCHINCHINE

The third auxiliary post office, given the letter "C", opened after World War I. Like its counterparts, it employed the type G1 postmark in the 1930s.



POSTMARK TYPE: G1
PERIOD OF USE: 1929-30

POSTAL MARKINGS
SAIGON C COCHINCHINE 2-5 29
registration label
REVERSE
ST ETIENNE LOIRE 31-5 29

SAIGON C COCHINCHINE

The hexagonal "SAIGON C" postmark is only recorded for the year 1949. Soon thereafter "SUD VIET-NAM" replaced "COCHINCHINE" on all postmarks.



POSTMARK TYPE: H1
PERIOD OF USE: 1949



POSTAL MARKINGS
SAIGON C COCHINCHINE 1-7 1949

SAIGON C
SUD VIET-NAM

With the Saigon C type V1(t) postmark, there is no space between the words "SUD" and "VIET-NAM."



POSTMARK TYPE: V1(t)
PERIOD OF USE: 1949



POSTAL MARKINGS
SAIGON C SUD VIET-NAM 1-12 1949
registration label
REVERSE
CANTHO SUD VIET-NAM 2-12 1949

SAIGON C
SUD VIET-NAM

The dashed hexagonal type VH2 postmark appeared at Saigon in 1950 and remained in service for two years.



POSTMARK TYPE : VH2
PERIOD OF USE: 1950-52



POSTAL MARKINGS
SAIGON C SUD VIET-NAM 12-8 1950
REVERSE
CAMPILE CORSE 17-8 1950

SAIGON D COCHINCHINE

The type H2 postmark for the Saigon D auxiliary post office is only known from 1949. In 1950, "SUD VIET-NAM" replaced "COCHINCHINE" in these postmarks.



POSTMARK TYPE: H2
PERIOD OF USE: 1949



POSTAL MARKINGS
SAIGON D COCHINCHINE 21-4 1949
REVERSE
SAIGON R.P. COCHINCHINE 21-4 1949

SAIGON D
SUD VIET-NAM

The type V1(t) postmark from the Saigon D auxiliary post office is known to have been in service for only two years.



POSTMARK TYPE: V1(t)
PERIOD OF USE: 1949-50



POSTAL MARKINGS
SAIGON D SUD VIET-NAM 9-3 1950

SAIGON D SUD VIET-NAM

Auxiliary post office Saigon D was opened in 1947 to replace the former "SAIGON-COMMERCE" post office. The dashed hexagonal type VH2 postmark was in service for only a few years.



POSTMARK TYPE: VH2
PERIOD OF USE: 1950-52



POSTAL MARKINGS
SAIGON D SUD VIET-NAM 3-5 1950

SAIGON-D
SUD VIET-NAM

Auxiliary post office Saigon D was opened in 1947 to replace the former "SAIGON-COMMERCE" post office. The dashed hexagonal type VH2 postmark was in service for only a few years. The postmark's last year of use was 1952.



POSTMARK TYPE: VH2
PERIOD OF USE: 1950-52



POSTAL MARKINGS
SAIGON D SUD VIET-NAM 17-1 1952

SAIGON E COCHINCHINE

The Messageries Maritimes post office was replaced by post office E around 1947. Its first postmark employed the solid line hexagonal type H1 style.



POSTMARK TYPE: H1
PERIOD OF USE: 1948-50



POSTAL MARKINGS
SAIGON-E COCHINCHINE 20-12 48

SAIGON F
SUD VIET-NAM

The only postmark known from the Saigon F auxiliary post office is of the type VH2 format.



POSTMARK TYPE: VH2
PERIOD OF USE: 1951-52



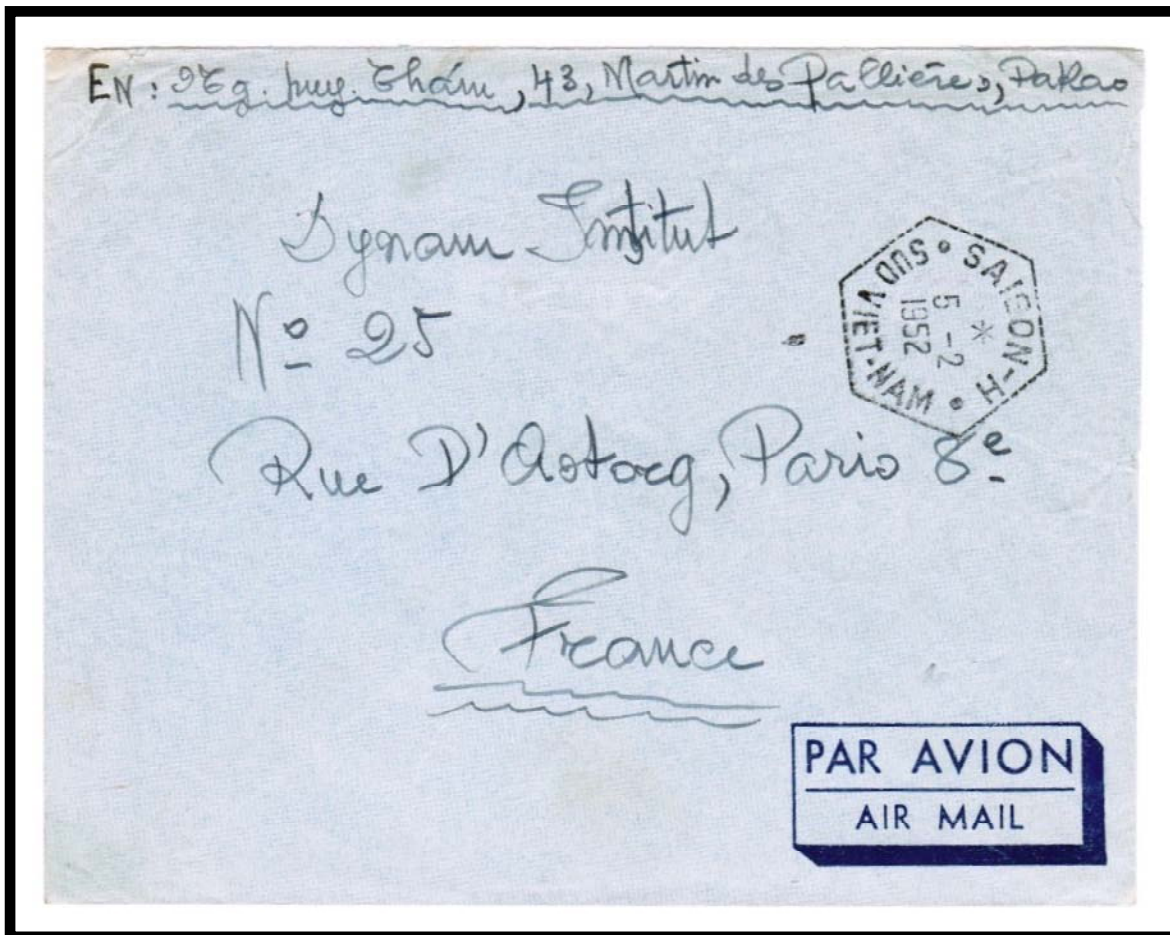
POSTAL MARKINGS
SAIGON-F SUD VIET-NAM 6-9 1951

SAIGON H
SUD VIET-NAM

The only recorded postmark style for auxiliary post office H was type VH1, which was used from 1951 through 1955.



POSTMARK TYPE: VH1
PERIOD OF USE: 1951-55



POSTAL MARKINGS
SAIGON-H SUD VIET-NAM 5-2 1952
REVERSE
SAIGON-H SUD VIET-NAM 5-2 1952

SAIGON-I SUD VIET-NAM

Auxiliary post offices were assigned identifying letters in alphabetical order. The very last letter used for Saigon's auxiliary offices was the letter "I." Post Office I's only postmark was in the VH1 format from the years 1950-51.



POSTMARK TYPE: VH1
PERIOD OF USE: 1950-51



POSTAL MARKINGS
SAIGON-I SUD VIET-NAM 30-7 1952